

Punch List



January 2026

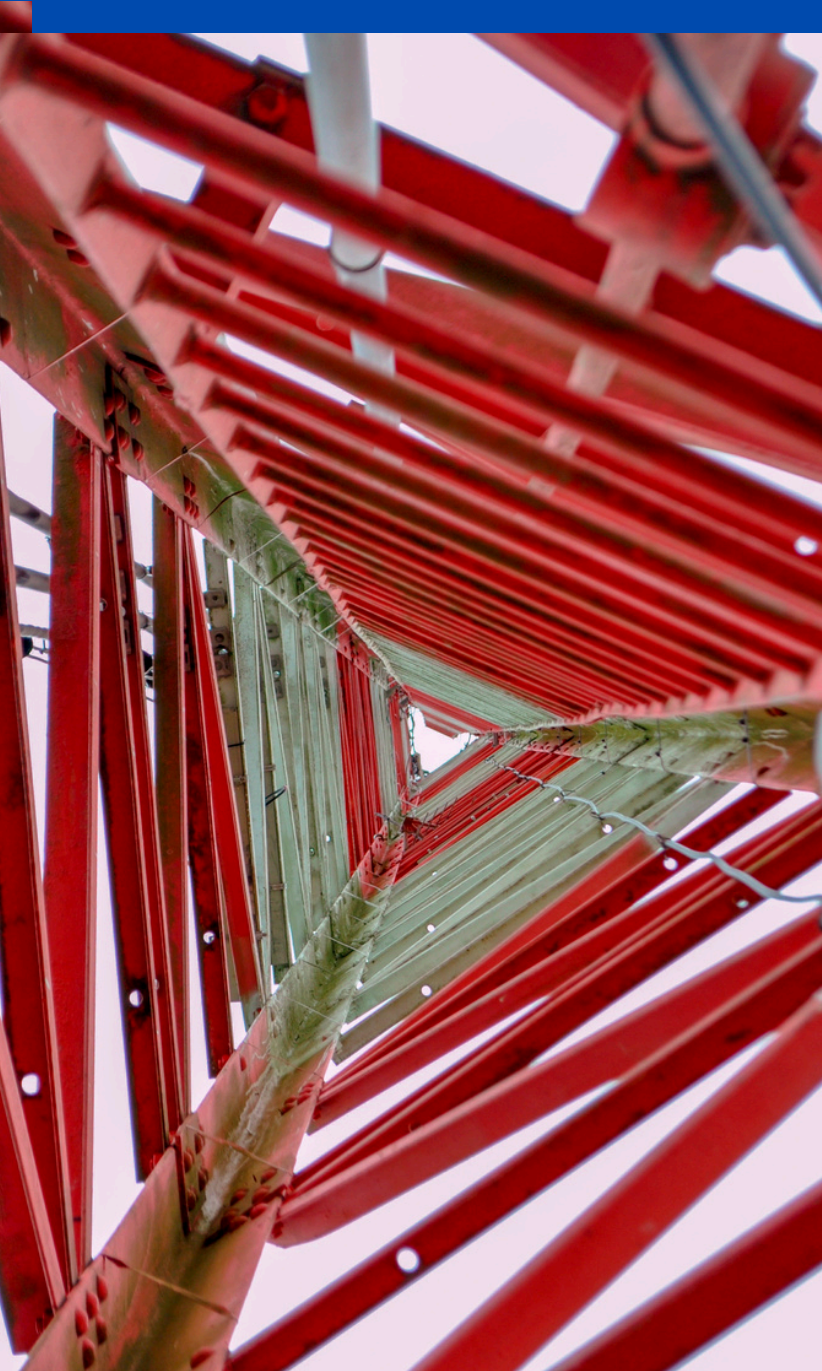


TABLE OF CONTENTS

In this newsletter:

Current Membership

Page 2

New Members

Page 3

Lien Information

Page 4

Safety Corner

Pages 5-6

Compliance Corner

Pages 7-8

Meeting Highlights

Page 9

Norma Mann Award

Page 10

Christmas Party Highlights

Pages 11-12

Upcoming Events

Page 13

TCA Benefits

Page 14-15

ASSOCIATION LEADERSHIP

President: Debbie Parker, King of Texas Roofing

1st Vice President: Tommy Parker, Fox Electric

2nd Vice President: Rob Petitti, INSURICA

Treasurer: Donna Nuernberg, Donna Nuernberg CPA

Secretary: Matthew Singel, Anderson Paving

Past President: Bryan Kindopp, Staley Steel

Director: Brad Chandler, Intex Electric

Director: Tom Crossland, SitePro Rentals

Director: Ben Crowell, Fritz Metals

Director: Vacant

Legal Counsel: Sewall "Spike" Cutler, Cutler Smith, P.C.

Executive Director: Carrie Buckley

ASSOCIATION COMMITTEES

Education: Matthew Singel, Chairperson

Events: Robert Petitti, Chairperson

Legislative: Becca Neu, Chairperson

Membership: Ben Crowell, Chairperson

Philanthropy: Debbie Parker, Chairperson

Safety: Tommy Parker, Chairperson

MEMBERSHIP

SUBCONTRACTORS

Advanced Concrete Surfaces
Aguilar Concrete
American Automatic Sprinkler
Anderson Paving
APEX Services
Astro Sheet Metal
Barber Specialties
Brannam Mechanical
C&C Concrete Pumping
Caparral Welding
Clifford Power Systems
Country Glass & Mirror
Critical Electric Systems Group
Dallas Commercial Glazing
E-MC Electrical Services
Enterprise Plumbing
Facility Construction Services
Fox Electric
Fritz Metals

G & M Electric Services
Garay's Concrete Work
Groves Electrical Service
Hall Electrical Services
Intex Electrical
JDS Contractors
JMD & Associates
K Thompson Electric
King of Texas Roofing
L & M Aerial & Underground
Master Construction
Metric Concrete
Midway Sealcoating
Morris Drywall
N2 Electric
Neuco & Associates
New Generation Mechanical
PCI Construction
Petri Electric
Richardson Mechanical

Ronparco
RV Plumbing
Site Landscape Services
Skinner Masonry
SRH Landscape
Solid Earth Construction
Solid Foundations Concrete
Solmar Prof. Cleaning
Staley Steel
Star Roofing & Sheet Metal
Stiles Electric
Sunnyvale Millwork
Sustainable Glazing
Concepts
System Electric
Texas Specialties &
Installation
Trinity Insulation
Vrzak Electric
Wilks Masonry

ASSOCIATES

Black Belt Consulting
BSBD Group
Cornerstone Safety
Cutler Smith, P.C.
Donna Nuernberg, CPA
EOS Worldwide
FCCI Insurance Group
Frost Bank
Industry, LLC

INSURICA
Markel Surety
McCauley Bond Agency
myIT.com
On-Site IT Services
Patterson & Associates
PCL Contract Bonding
PlainsCapital Bank
Proman Skilled Trades

Safety Management Group
SitePro Rentals
STC Safety
Sunstate Equipment
Texas Trades
The ProHunters
TrendHR
Tribrach Solutions
Unity Insurance Partners

Welcome

2026

NEW MEMBERS



G & M
Electric
Services



Markel
Surety

SAM is still on the #Roadto100!

LIEN INFORMATION



SAM collects and compiles Mechanics Liens Information filed in Dallas, Tarrant and Collin Counties on an ongoing basis.

Members regularly use this information to learn more about Financial Issues that might be plaguing a Project.

During our happy hour meetings, we invite our attendees to share their insight based on first-hand experience with a Contractor or on a Project.

SAM was founded on the foundation of Education and Information Exchange.

Our members find the Lien Information and Monthly Information Exchange the most valuable aspects of their annual investment.

This is a glimpse of the information available in the full, searchable spreadsheet which is available in our Member Portal.

Contact Carrie Buckley for more information about your future SAM Membership.

2025 LIEN STATISTICS

Dallas County

2,436 Liens Files for \$288,057,261.00

Average Lien: \$118,250.11

1,610 Liens are Over \$10,000

Largest Lien: \$43,398,772.96

Property: 1201 Elm St. Dallas, TX

Tarrant County

239 Liens Files for \$178,076,576.00

Average Lien: \$745,090.28

228 Liens are Over \$10,000

Largest Lien: \$8,350,000.00

Property: 1514 Meandering Way Westlake, TX

Collin County

210 Liens Files for \$138,815,691.00

Average Lien: \$ 661,027.10

206 Liens are Over \$10,000

Largest Lien: \$4,783,861.04

Property: Lot 11R1 Amending Plat of Lots 8R1 9R2
And 11R1 THE WOODS OF ASCOT HEATH

Subbie SAM's Safety Corner



Meet Subbie SAM!

Subbie SAM didn't grow up planning to work in construction — he grew up building his way into it. As a kid, he was the one stacking holiday presents into skyscrapers, turning couch cushions into job sites, and drawing blueprints on anything that would hold still long enough. By the time he was old enough to hold a real toolbelt, everyone already knew: construction was in his bones.

SAM officially joined the subcontractor world after shadowing a family friend on a jobsite and falling in love with the teamwork it took to bring a project to life. He worked his way up, learned every trade he could, and quickly became known for one thing above all else:

He never compromised on safety.

To SAM, safety isn't just a checklist — it's how he takes care of his team. His favorite part of working in construction is watching a project rise from the ground because everyone worked smart, worked together, and went home safe.

Today, Subbie SAM proudly represents the subcontracting community. Whether he's cheering on apprentices, showing off best practices, or making sure PPE is always on point, SAM is here to remind us that great work starts with great safety.



Subbie SAM's Safety Corner



Winter Weather Preparedness

Cold weather presents unique challenges for construction teams, equipment, and facilities, making preparation essential for safety and efficiency. Now is the perfect time to review and update cold-weather preparedness plans to ensure everyone is ready to handle inclement conditions. Determine who is responsible for making work or no-work decisions when weather worsens, and confirm that communication systems—such as call trees or contact lists—are accurate, current, and assigned to the right people. Crews should be equipped and trained for cold-weather conditions, with plans in place for early shutdowns if conditions deteriorate to ensure everyone gets home safely. Facility readiness is equally important; stock ice melt or deicer for sidewalks, entryways, and access points, and review safe parking lot practices to prevent slips and falls. Fleet drivers should be reminded to watch for frozen intersections and hidden hazards caused by irrigation leaks, even when roads appear clear. Finally, confirm that emergency response procedures are ready for urgent situations during hazardous driving conditions. Proactive planning helps safeguard workers, reduce disruptions, and keep operations running smoothly throughout the winter season.



Subbie SAMantha's Compliance Corner

Meet Subbie SAMantha!

Subbie SAMantha has been negotiating since childhood. While other kids traded toys, she drafted terms. Clear rules, fair agreements, and everything in writing were her trademarks long before she entered construction.

Working in the field taught her how smoothly projects run when expectations are documented and how messy things get when they aren't. After seeing her crew suffer through a project full of vague instructions, she vowed that no subcontractor would be left unprotected on her watch.

Now she's known for sharp thinking, sharper paperwork, and spotting unreasonable requests instantly. She champions transparency, fairness, and agreements that actually match reality. And if a GC tries to sneak in an undocumented change, SAMantha shuts it down with confidence and class.

What she loves most is helping subcontractors protect their value and build projects on solid, well-written ground.





Subbie SAMantha's Compliance Corner

OSHA

Staying on top of OSHA compliance doesn't have to be a headache. Make sure you're updating your OSHA 300 log regularly instead of saving everything for the last minute, and keep a clear eye on which incidents are recordable and which are not. Don't forget the calendar either: once your yearly information is ready, you'll need to file your OSHA 300 form by the deadline— for 2025, that's March 2nd.

A little consistency through the year makes compliance a lot less stressful.

OSHA's Complete Guide with Fillable Worksheets
(English & Spanish) can be found

[HERE](#)

YOU MAY BE REQUIRED TO FILE THIS FORM ELECTRONICALLY!

Learn more about OSHA's Electronic Filing Requirements

[HERE](#)

Reminder →

2025 OSHA 300 form deadline = March 2nd



December and January Meeting Highlights



Norma Mann Award



MaryEllen with SAM's Current & Past Presidents:

SAM exists today because of Norma Mann. She was a fierce advocate for subcontractors and believed deeply in fair treatment for those who build our communities. Norma was a woman in construction long before women were commonly seen in the industry. She refused to accept “that’s just how it’s done” when subcontractors were treated unfairly, and she worked tirelessly to change it.

Each year, the SAM Board of Directors recognizes an individual who embodies Norma’s spirit through their contributions to SAM and to the construction industry as a whole. The 2025 Norma Mann Award recipient is MaryEllen Cook. If you don’t know her yet — don’t worry — she will seek you out! MaryEllen greets everyone with a smile, a compliment, and usually a hug. She will make sure you have a cocktail in hand and that you’ve met everyone in the room. Her radiant smile and welcoming spirit are a bright light at our events and meetings.

MaryEllen has long been a champion for SAM. She often recalls the early days when meetings had only a handful of attendees. Her advocacy, loyalty, and passion for this association have played a significant role in SAM’s growth over the past 15 years.

At our luncheon, members shared heartfelt memories and kind words about MaryEllen. The words most often used to describe her were friendly, genuine, considerate, funny, beautiful, and welcoming — a reflection of the joy she brings to everyone around her.

Congratulations, MaryEllen! And thank you for all you have done, and continue to do, to support SAM.



SAM CHRISTMAS PARTY





MASTER SCHEDULE

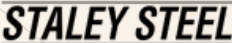


2026 CORPORATE SPONSORS

Event Sponsors



Premier Sponsors



UPCOMING EVENTS



Event	Date Time	Description	Registration Link (Active in PDF)
SAM Membership Meeting	2/5/2026 4:00 p.m.	Ashlie Hagemann with PlainsCapital Bank's Fraud Department will share actionable strategies to reduce exposure to bank fraud. Registration Includes Heavy Appetizers and (2) Drink Tickets. Saltgrass Steakhouse, Bedford	REGISTER
SAMU: Risk Management Essentials	2/11/2026 11:00 a.m.	Risk Management Essentials introduces new construction professionals to the real-world risks that shape project success. Registration includes Lunch. IEC - Dallas, Irving	REGISTER
SAM's Annual Toss & Taste	2/19/2026 12:00 p.m.	It's time to show off your best chili recipe and your cornhole skills at our Annual Toss & Taste! Chill Bar & Grill, Lewisville	REGISTER
SAM Executive Breakfast	3/5/2026 7:30 a.m.	Jesse Abercrombie of Edward Jones will guide business leaders through the fundamentals of succession planning. Park City Club, Dallas	REGISTER
SAMU: Project Execution	3/11/2026 11:00 a.m.	This course is designed for project managers, estimators, and superintendents who want to strengthen jobsite coordination and project execution skills. IEC - Dallas, Irving	REGISTER



SAVE THE DATE



Annual Golf Tournament
May 14, 2026 at Grapevine Golf Course

Subcontractors Association of the Metroplex
P.O. Box 210261 | Bedford, Texas 76095
directoresam-dfw.org | 817.266.1909 | www.sam-dfw.org



Get Free Toolbox Talks Delivered to Your Inbox

TOOLBOX TALKS ARE A BI-WEEKLY GUIDE FOR EMPLOYERS TO USE IN SAFETY MEETINGS

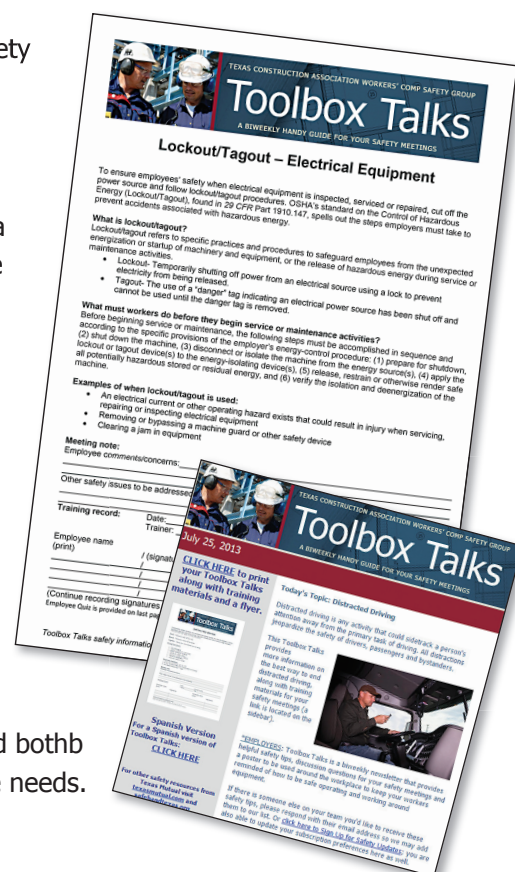


Visit our website at
txconstructionwc.com
and click on "Sign Up For
Safety Updates."

Streamline your safety meetings

If you want to improve safe work practices among your employees and reduce your claims costs, register for TCA's bi-weekly Toolbox Talks. Each single-topic Toolbox Talks is:

- **Free.** Toolbox Talks are a benefit of your Texas Mutual® coverage and enrollment in the TCA Safety Group.
- **Multipurpose.** Each one-page Toolbox Talks includes a short safety message and discussion questions on the first page. The second page is a poster you can display to keep the message alive during the work day.
- **Test your employees.** Each Toolbox Talks includes a quiz you can use to make sure your employees understand the safety message presented.
- **Short.** Supervisors can hold safety meetings in as little as five minutes.
- **Convenient.** Bi-weekly, we'll send a new Toolbox Talks to your inbox.
- **Available in English and Spanish.** We'll bsend bothb versions to accommodate your diverse workforce needs.



Interested?

Send an email to info@txconstructionwc.com with Toolbox Talks in the subject line. In the body of your email, give us the following information:

Company name | Person to receive the Toolbox Talks | Email address

Or you can visit our website at **txconstructionwc.com** and click "Sign Up for Safety Updates." Toolbox Talks issues are also available on the TCA website, **www.texcon.org**. To access them, click on the Safety - TCA Toolbox Talks tab, **https://www.texcon.org/texcon/Safety-TCA_Toolbox_Talks.asp**.





1011 San Jacinto Blvd, Ste 330
Austin, TX 78701-2494
p 512-473-3773
f 512-473-3777
www.texcon.org



TCA Endorsed Workers' Compensation Insurance Program with Texas Mutual



The Texas Construction Safety Group provides for lower workers' compensation insurance premiums to its members through its group purchasing power and premium discounts. This TCA endorsed program was developed to benefit companies in all construction trades. In addition to participants being eligible for Texas Mutual Insurance Company's regular dividend, they are also eligible for the Special TCS group dividend. Coverage is purchased through the members' insurance agent. More details are available at www.txconstructionwc.com.



TCA - Office Depot/ Office Max Discount Program

ODP Business Solutions/Office Depot Discounts are offered through this member benefit program. TCA has partnered with ODP Business Solutions and Excelerate America to provide our members with discounts on almost all products. TCA members receive 10-30% off the top 100 items business purchase most and up to 55% off additional business products. In addition to product discounts, our members save up to 40% off black and white copies, 25% off color copies, and 40% off finishing services. For more information contact Patrick Finnegan at pfinnegan@texcon.org.



TCA-rapid! PayCard Program

Provide your company with one of the most comprehensive PayCard benefits and ePayroll program designed for employers choosing to convert to electronic delivery of payroll at ZERO cost. Stop the expensive paper check routine and save time, costs, and minimize risk! The PayCard program is FREE to TCA members. Contact Patrick Finnegan, pfinnegan@texcon.org for more information.



TCA Retirement Collective

NEW!

The TCA Retirement Collective is a multiple employer 401(k) Plan exclusively designed for TCA Member Companies to provide 401(k) Plans to their employees. Our multiple employer plan functions as a company's 401(k) support team so a company's staff doesn't need to act as 401(k) experts. The TCA Retirement Collective eases plan administration, is customizable, reduces employer fiduciary liability by 95%, is fully compliant, has low fees due to volume pricing and is serviced by our experienced national providers: The Retirement Advantage, Raymond James Financial Services, & Ameritas Retirement Plans. Contact Patrick Finnegan at pfinnegan@texcon.org.

Over for MORE Benefits! →→→



TCA-WEX Fuel Card & Fleet Management Program

Take advantage of TCA's Fuel Card Program for discounted pricing on fuel management. Get all of the tools you need to reduce costly waste and save on fuel management costs. This fuel card program gives you security by helping to protect against unauthorized spending and gives your drivers the convenience of being able to fill up just about anytime and anywhere they want. ExxonMobil & Leasing Associates have teamed up to provide TCA members a new and improved fuel card! The ExxonMobil fuel card powered by WEX provides significant savings and greater control over the costs associated with fueling your fleet vehicles. Start saving 5 cents on every gallon. PLUS, Leasing Associates Fleet Management Program provides full life vehicle management from acquisition to operation to disposal. This comprehensive program provides substantial savings on overall fleet operations, whether a few vehicles or a thousand! TAKE CHARGE of your total vehicle costs today! Contact Patrick Finnegan, pfinnegan@texcon.org for more information.



TCA Safety Management Programs

Total Workplace Safety (TWS) offers services including First Aid Kit Supplies and Refill Service, AED Defibrillator Sales and Maintenance Service and Safety Database Management. For more information on this safety management benefit, contact Patrick Finnegan at pfinnegan@texcon.org. Visit twfsafety.net for more information!



TCA Safety Communication Achieve Performance Excellence with MindForge

Developed with the help of industry leaders, MindForge is a platform that allows you to establish a communication network with your field personnel and put just-in-time information and education in the palm of their hand. With efficient knowledge sharing across all crews, you will save time, increase your work quality, and empower your workforce to stay safe. TCA members receive a 20% discount. Learn more at mindforge.live.



TCA Education Center

A foundational plank of the Texas Construction Association's mission is to provide education and resources to our members. TCA encourages members to become well informed about the construction industry and construction law. TCA's commitment is to make available to our members decidedly useful information; to provide superior presentations by qualified experts in the construction and construction related fields; and to help our members maintain their leading edge in the construction industry. Visit our education center at www.texcon.org.

TCA Construction Contract Clause Library – Members Only Access –

TCA provides a glossary of contract clauses commonly found in construction contracts. Explanations and examples are given to help members apply the information to their own specific situations.



TCA Career Center

TCA's Career Center is the Texas Construction Industry's premiere resource for online employment connections. Here, employers and recruiters can access the most qualified talent pool with relevant work experience to fulfill staffing needs. Visit our career center at jobs.texcon.org for more information.