

Punch List



November 2025

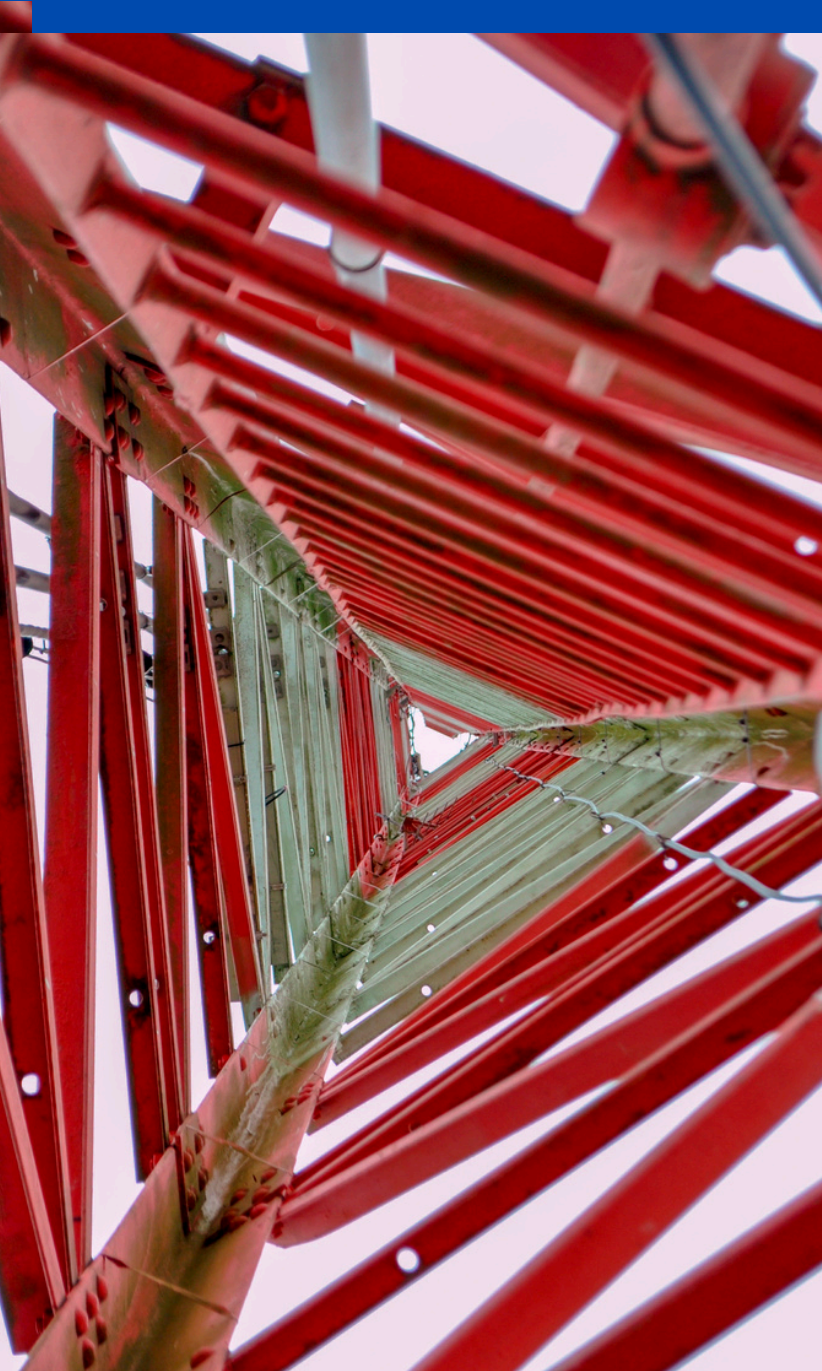


TABLE OF CONTENTS

In this newsletter:

Current Membership
Page 2

New Members
Page 3

OSHA Updates
Page 4-5

Safety Corner
Page 6-7

Lien Information
Page 8

Fall Highlights
Pages 9-10

Clay Shoot
Pages 11-12

Trades Day
Page 13

Upcoming Events
Page 14



ASSOCIATION LEADERSHIP

President: Bryan Kindopp, Staley Steel

1st Vice President: Debbie Parker, King of Texas Roofing

2nd Vice President: Tommy Parker, Fox Electric

Treasurer: Josue Garay, Garay's Concrete Work

Secretary: Matthew Singel, Anderson Paving

Past President: Eric Hernandez, Patterson & Associates

Director: Brad Chandler, Intex Electric

Director: Christy Juarez, C & C Concrete Texas Pumping

Director: Donna Nuernberg, Donna Nuernberg CPA

Director: Rob Petitti, INSURICA

Director: Tom Crossland, SitePro Rentals

Legal Counsel: Sewall "Spike" Cutler, Cutler Smith, P.C.

Executive Director: Carrie Buckley

ASSOCIATION COMMITTEES

Education: Matthew Singel, Chairperson

Events: Robert Petitti, Chairperson

Legislative: Becca Neu, Chairperson

Membership: Eric Hernandez, Chairperson

Philanthropy: Josue Garay, Chairperson

Safety: Tommy Parker, Chairperson

MEMBERSHIP

SUBCONTRACTORS

Advanced Concrete Surfaces
Aguilar Concrete
American Automatic Sprinkler
Anderson Paving
APEX Services
Astro Sheet Metal
Barber Specialties
Brannam Mechanical
C&C Concrete Pumping
Caparral Welding
Clifford Power Systems
Country Glass & Mirror
Critical Electric Systems Group
Dallas Commercial Glazing
E-MC Electrical Services
Enterprise Plumbing
Facility Construction Services
Fox Electric
Fritz Metals

Garay's Concrete Work
Groves Electrical Service
Hall Electrical Services
Intex Electrical
JDS Contractors
JMD & Associates
K Thompson Electric
King of Texas Roofing
L & M Aerial & Underground
Master Construction
Metric Concrete
Midway Sealcoating
Morris Drywall
N2 Electric
Neuco & Associates
New Generation Mechanical
PCI Construction
Petri Electric
Rice Underground
Richardson Mechanical

Ronparco
RV Plumbing
Sigma Marble & Granite
Site Landscape Services
Skinner Masonry
SRH Landscape
Solid Earth Construction
Solid Foundations Concrete
Solmar Prof. Cleaning
Staley Steel
Star Roofing & Sheet Metal
Stiles Electric
Sunnyvale Millwork
Sustainable Glazing
Concepts
System Electric
Texas Specialties &
Installation
Trinity Insulation
Vrzak Electric
Wilks Masonry

ASSOCIATES

Ask Linda HR
Black Belt Consulting
BSBD Group
Cornerstone Safety
Cutler Smith, P.C.
Donna Nuernberg, CPA
EOS Worldwide
FCCI Insurance Group
Frost Bank

Industry, LLC
INSURICA
McCauley Bond Agency
myIT.com
On-Site IT Services
Patterson & Associates
PCL Contract Bonding
PlainsCapital Bank
Proman Skilled Trades

Safety Management Group
SitePro Rentals
STC Safety
Sunstate Equipment
Texas Trades
The ProHunters
TrendHR
Tribrach Solutions
Unity Insurance Partners

NEW MEMBERS



Hutchinson
CONSTRUCTION

THE BONADIO GROUP

Accounting, Consulting & More



JOIN SAM IN Q4 for \$650

Membership will be ACTIVE through December 31, 2026



OSHA Updates

OSHA Update Snapshot – Fall 2025

Government Shutdown: Limited OSHA Activity

With the federal shutdown now past 30 days, most OSHA operations are paused except for activities addressing imminent dangers, fatalities, and catastrophes. Routine inspections are limited. However, 22 state-run OSHA programs (e.g., Cal/OSHA, NC-OSHA) remain fully operational.

OSHA's FY 2026 Budget: \$50M in Question

Three competing proposals are on the table:

- Senate: Maintain FY 2025 funding at \$632.3M, 1,810 FTEs, full state plan grants, and continuation of the Susan Harwood Training Grant Program. Focus on robust enforcement and outreach.
- House/Administration: Cut funding to \$582.4M, 1,587 FTEs, and reduce compliance and whistleblower funds. Focus on deregulation and reduced inspection targets (24,929 planned).
- Final funding remains uncertain.

OSHRC Back in Business

The Occupational Safety and Health Review Commission (OSHRC) now has one commissioner — Jonathan Snare, confirmed October 7, 2025 — restoring limited review capability after months of inactivity. Although lacking a full quorum, employers can again pursue hearings before Administrative Law Judges (ALJs).

Penalty Reductions Expanded for Small Employers

OSHA's Field Operations Manual (revised July 14, 2025) increases penalty reductions for small businesses:

- Up to 70–80% reductions for employers with ≤25 employees (depending on violation type).
- Additional reductions:
 - 25% for strong safety programs
 - 20% for clean inspection history
 - 15% for prompt hazard correction
 - This update significantly broadens relief beyond the prior ≤10-employee threshold.

OSHA Updates

New OSHA Chief: David Keeling

Recently confirmed David Keeling (former Amazon and UPS safety exec) is expected to emphasize collaboration with employers and a more flexible approach to rulemaking, including the pending national heat safety rule. Worker advocates, however, caution this may reduce use of the “general duty” clause for enforcement.

Clarifying OSHA’s “General Duty” Clause

OSHA’s July 2025 proposed rule seeks to codify limits on applying the General Duty Clause to inherently risky professions (e.g., sports or entertainment). The proposal aligns with Justice Kavanaugh’s dissent in the *SeaWorld v. Perez* case, affirming OSHA’s authority shouldn’t extend to hazards intrinsic to those professions.

Fall Protection Citations: Ask the Right Questions

If cited for a fall protection violation, conduct a thorough internal review.

Key areas to evaluate include:

- Existence and communication of fall protection rules
- Employee training, supervision, and prior discipline
- Availability and use of proper equipment
- Documentation of site inspections, safety monitoring, and disciplinary actions
- Whether you’re the employer or a controlling employer under OSHA’s multi-employer policy

Asking the right questions early can reveal strong defenses or mitigation options.

Stay safe, stay compliant, and stay informed!



Safety Corner

Presented BY:



Preventing Silica Exposure On The Job

You can't see it, smell it, or taste it—but respirable silica dust can scar your lungs for life.

Every time we cut, drill, or grind concrete, stone, or masonry, we release silica dust. It's fine—so fine it slips deep into your lungs without you knowing. Over time, it hardens your lung tissue, makes it harder to breathe, and leads to silicosis, a disease with no cure. But exposure is preventable if we control the dust and wear the right protection.

What We're Seeing

- Concrete cutting done dry, without water or ventilation
- Dust clouds floating in the air during grinding or cleanup
- Workers removing respirators mid-task because "it's quick"
- Dry sweeping instead of using HEPA vacs or wet cleanup methods

Understanding The Risks Of Silica Dust

What Is It?

- Silica is a mineral found in rock, sand, stone, and concrete.
- When disturbed, it creates respirable crystalline silica (RCS)—dust 100x smaller than a grain of sand.

Health Effects:

- Silicosis (lung scarring that makes breathing difficult)
- Lung cancer
- Chronic Obstructive Pulmonary Disease (COPD)
- Kidney disease and heart failure

The damage is permanent. Symptoms may not show up for years—but by then, it's too late.

Who's At Risk?

High-risk tasks include:

- Cutting or drilling concrete or masonry
- Crushing rock
- Tunneling or excavation

Safe Practices To Control Silica Dust

1. Dust Suppression

- Use water-fed tools for cutting, drilling, and grinding

2. Ventilation

- Use local exhaust systems or tool shrouds with vacuums

3. Respiratory Protection

- Wear a fit-tested respirator when engineering controls can't fully contain dust
- Never modify or remove parts of your respirator
- Sandblasting requires full respiratory protection

4. Cleanup And Housekeeping

- Never dry sweep—use wet cleanup methods or HEPA vacs
- Keep surfaces clean to prevent dust buildup

What To Watch For

- Dry cutting or grinding without water
- Dust clouds visible in sunlight
- Workers not wearing or incorrectly wearing respirators
- Dry sweeping in dusty areas
- Dust buildup around tools or workstations

Simple Rules For Real Safety

- Use wet methods and ventilation to suppress dust at the source
- Wear a respirator when needed—no shortcuts

 Key takeaway

LIEN INFORMATION



SAM collects and compiles Mechanics Liens Information filed in Dallas, Tarrant and Collin Counties on an ongoing basis.

Members regularly use this information to learn more about Financial Issues that might be plaguing a Project.

During our happy hour meetings, we invite our attendees to share their insight based on first-hand experience with a Contractor or on a Project.

SAM was founded on the foundation of Education and Information Exchange.

Our members find the Lien Information and Monthly Information Exchange the most valuable aspects of their annual investment.

This is a glimpse of the information available in the full, searchable spreadsheet which is available in our Member Portal.

Contact Carrie Buckley for more information about your future SAM Membership.

CURRENT LIEN STATISTICS

Dallas County

2,001 Liens Files for \$183,088,814

Average Lien: \$91,499

1,326 Liens are Over \$10,000

Largest Lien: \$13,880,000

Filed by: Scalenorth Construction LLC

Filed Against: Tucasa Acquisition LLC

Property: 1635 Tucasa Dr., Irving

Tarrant County

196 Liens Files for \$153,405,679

Average Lien: \$782,682

188 Liens are Over \$10,000

Largest Lien: \$8,350,000

Filed by: Ripra Construction LLC

Filed Against: Mark Charlie Valente Spa Mark Valente and Jolynn Valente

Property: 1514 Meandering Way, Westlake

Collin County

174 Liens Files for \$118,181,902

Average Lien: \$679,206

171 Liens are Over \$10,000

Largest Lien: \$4,783,861

Filed by: Mosaic Building Company

Filed Against: 1105 Sarah St

Property: Lot 11R1 Amending Plat of Lots 8R1 9R2 and 11R1 The Woods of Ascot Heath



September & October Meeting Highlights



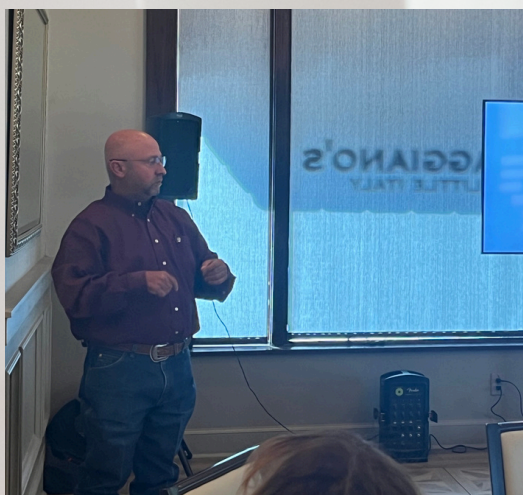
Cyber Security



**Condy
Karm**



**Peter
Vavrosky**



**Tommy
Parker**

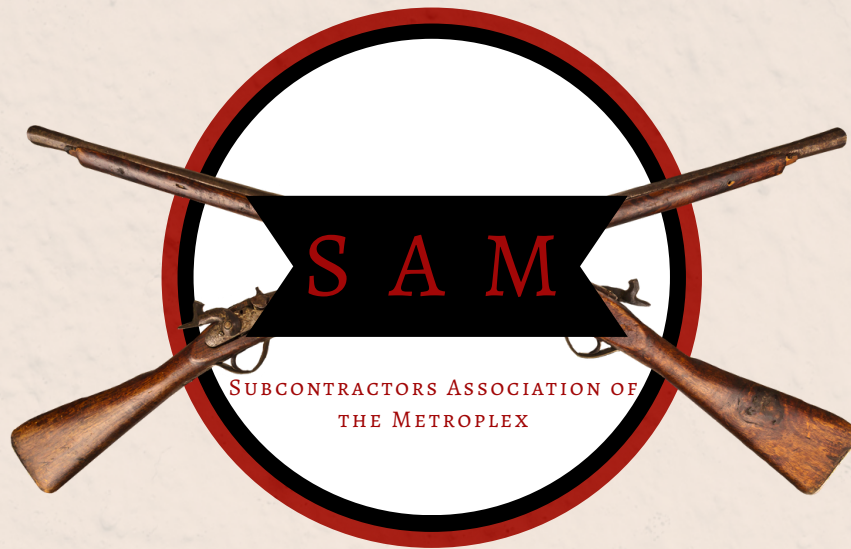


Meeting Highlights September & October

October Meeting



September Meeting







CIE Foundation

SAM Members SPOTTED at CIEF Trades Day!



TRADES DAY
A DAY FOR CONSTRUCTION
CAREER EXPLORATION

Upcoming Events

Employee Classifications

Lunch & Learn Meeting

December 10th

11:00 - 1:00

IEC Dallas

1931 Hereford Drive

Irving, TX 75038

[Register](#)

SAM Annual Christmas Party

December 11th

5:30 - 8:00

Saltgrass Steakhouse -

Bedford

1813 State Highway 121

Bedford, TX



[Register](#)



Upcoming Events

Employer Rights with ICE Happy Hour Meeting

January 8
4:00 - 6:00 p.m.

Saltgrass Steakhouse
1813 State Hwy 121
Bedford, Texas

[Register](#)



LinkedIn Marketing Strategies Lunch & Learn Meeting

January 14
11:00 a.m. - 1:00 p.m.

IEC Dallas
1931 Hereford Drive
Irving, TX 75038

[Register](#)